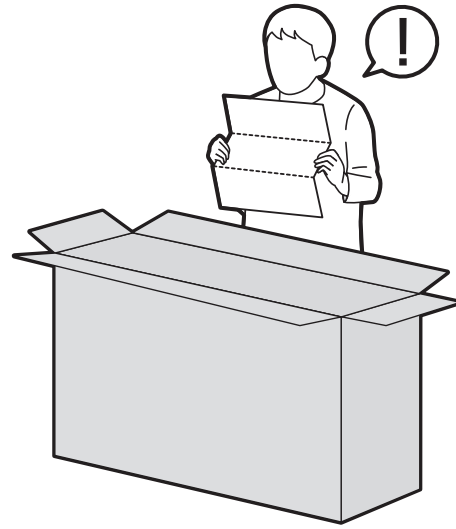
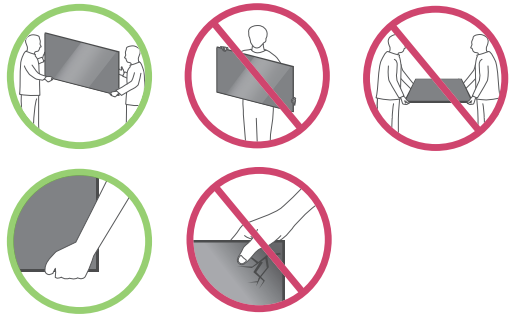
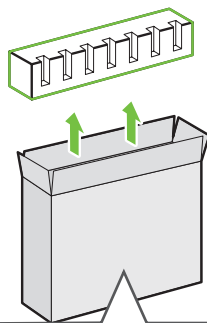


UP75*
UP76*

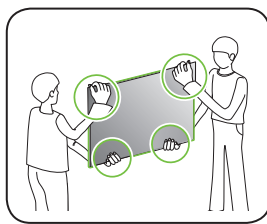


1

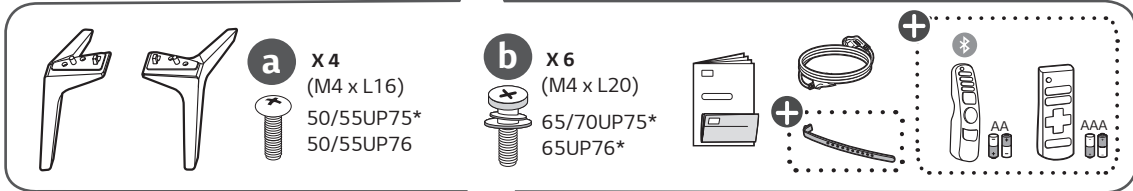
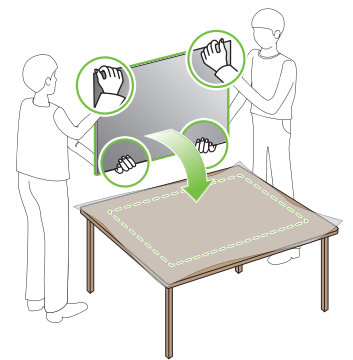
50/55UP75*
50/55UP76*



2

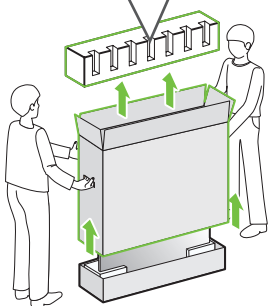


3

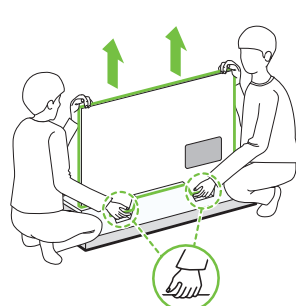


1

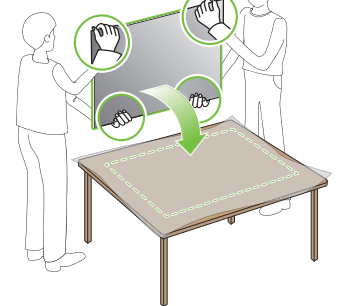
65/70UP75*
65UP76*



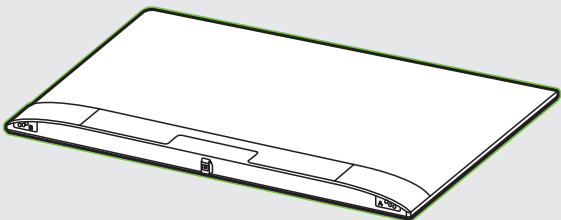
2



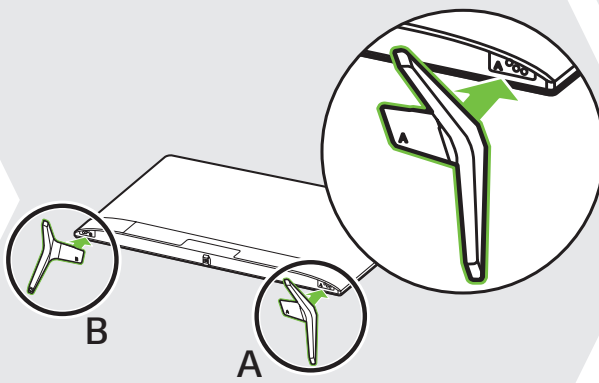
3



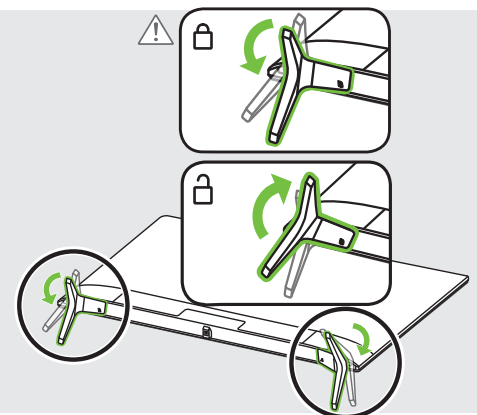
1



2

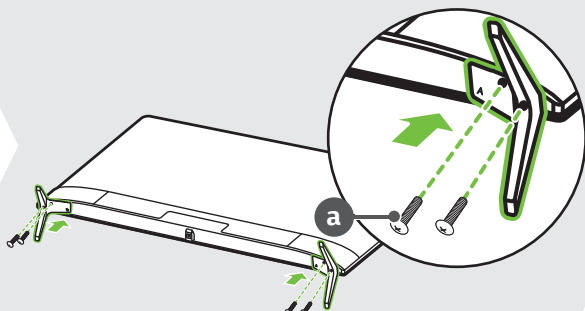


3



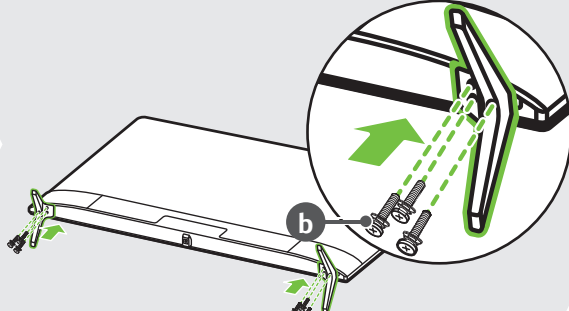
4-A

50/55UP75*
50/55UP76*

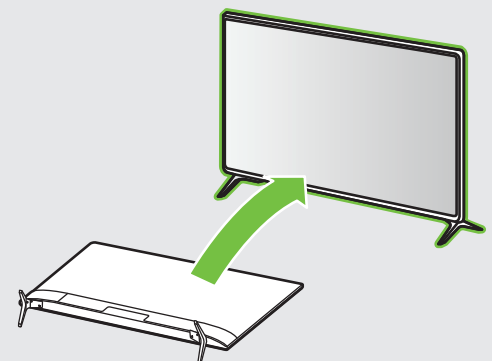


4-B

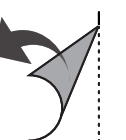
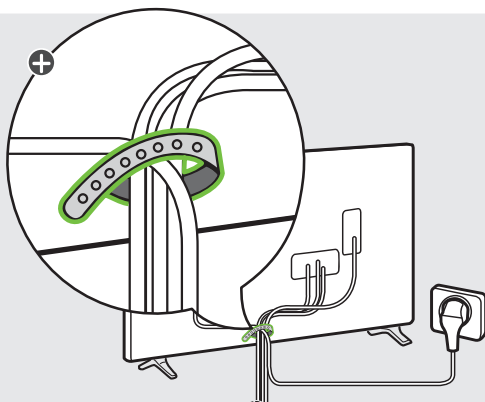
65/70UP75*
65UP76*

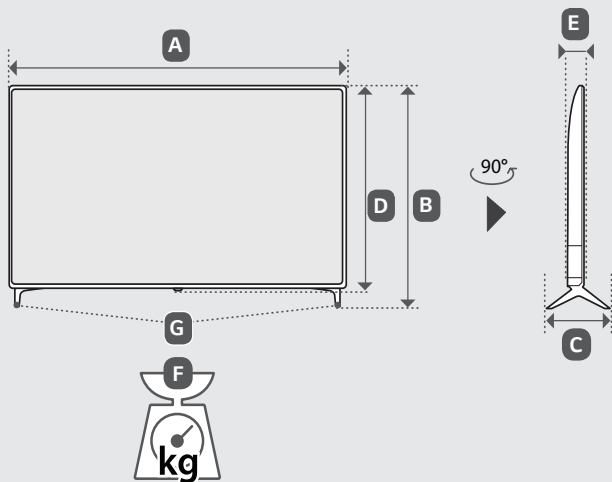
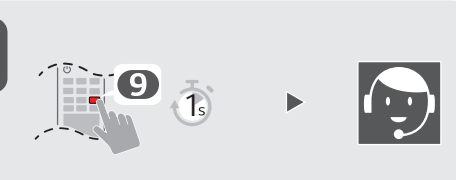
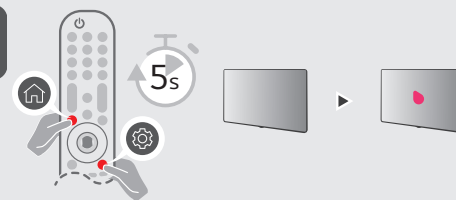
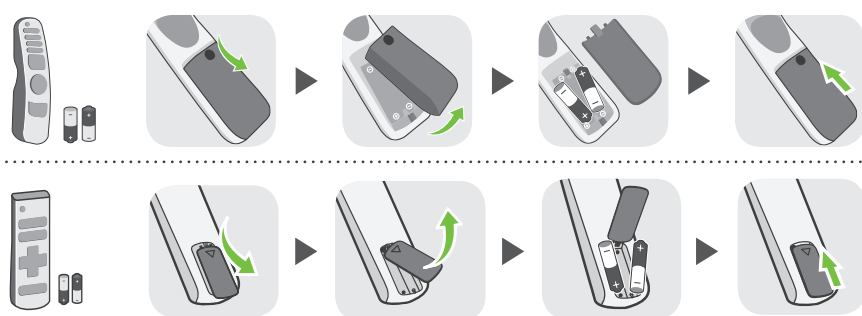
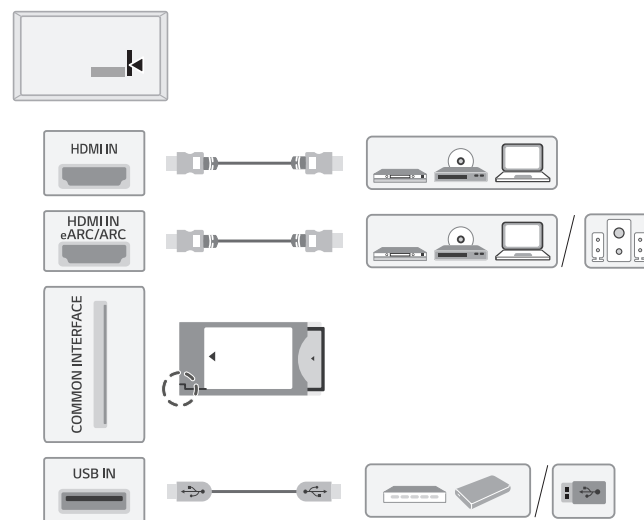
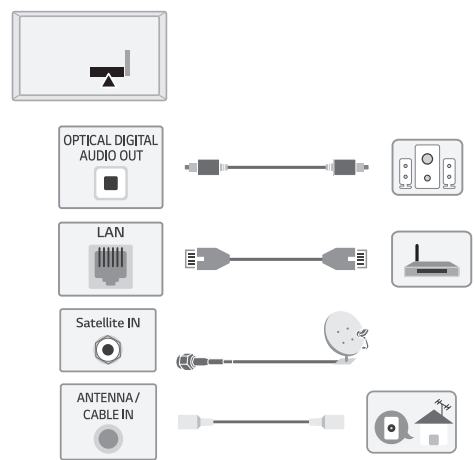


5



6





| | A | B | C | D | E | F | F-G |
|---|------|-----|-----|---------------------------|------|------|------|
| | (mm) | | | | | (kg) | |
| 50UP75003LF 50UP75006LF 50UP75009LF | 1130 | 719 | 235 | 663 | 86.3 | 11.4 | 11.3 |
| 50UP76006LC 50UP76506LD | 1130 | 722 | 231 | 663 | 86.3 | 11.5 | 11.3 |
| 55UP75003LF 55UP75006LF 55UP75009LF | 1244 | 783 | 235 | 726 | 87.1 | 14.4 | 14.3 |
| 55UP76006LC 55UP76506LD | 1244 | 786 | 231 | 726 | 87.1 | 14.5 | 14.3 |
| 65UP75003LF 65UP75006LF 65UP75009LF | 1463 | 910 | 255 | 850 | 87.8 | 21.5 | 21.3 |
| 65UP76006LC 65UP76506LD | 1463 | 914 | 269 | 850 | 87.8 | 21.6 | 21.3 |
| 70UP75006LC | 1578 | 984 | 299 | 913 | 91.1 | 31.4 | 30.7 |
| Power requirement | | | | AC 100-240 V ~ 50 / 60 Hz | | | |



- English** • Read **Safety and Reference**.
- Русский** • Прочтите **Руководство по технике безопасности**.
- Українська** • Прочитайте **"Правила безпеки та довідкова інформація"**.
- Қазақша** • **Қауіпсіздік нұсқаулығын** оқыңыз.
- O'zbekcha** • **Xavfsizlik bo'yicha ko'rsatmalar va havolalar**'ni o'qib chiqing.
- Монгол** • **Аюулгүй ажиллагааны зааварчилгааг** уншина уу.

⊕ : Depending on model / В зависимости от модели / Залежно від моделі / Үлгіге байланысты / Rusumiga qarab / Загвараас хамаарна